

**Alaska Department of Health & Social Services**  
**Division of Public Assistance**  
**Statewide Profile SFY 2021**

Total Caseloads, Benefits & Recipients	
Total Benefits Issued	\$387,075,017
Total Unduplicated Cases*	263,187
Total Unduplicated Recipients*	294,256

*\* Total Unduplicated Cases are unduplicated across months but Total Unduplicated Recipients are unduplicated across both months and programs*

Caseloads & Benefits by Program	Adult Public Assistance (APA)	Alaska Temporary Assistance Program <sup>2</sup> (ATAP)	Child Care Assistance Program (CC) <sup>5</sup>	General Relief Assistance (GA)	Heating Assistance Program <sup>4</sup> (HAP)	Interim Assistance (IA)	Medicaid <sup>3</sup> (ME)	Senior Benefits (SB)	Supplemental Nutrition Assistance Program <sup>1</sup> (SNAP)	Women, Infants and Children (WIC)
Annual Benefits Issued	\$60,164,987	\$16,169,883	\$12,393,254	\$601,194	\$7,015,108	\$684,488	n/a	\$20,634,208	\$260,978,868	\$8,433,027
Ave. Monthly Benefits	\$5,013,749	\$1,347,490	\$1,239,325	\$50,100	\$584,592	\$57,041	n/a	\$1,719,517	\$21,748,239	\$702,752
Annual Undup. Caseld	17,898	3,184	2,387	354	4,653	304	156,362	13,036	50,964	14,045
Annual Undup. Recips	17,898	9,148	3,815	510	12,005	304	264,856	13,036	114,365	24,301
Ave. Benefit/Household	\$308.91	\$637.15	\$940.80	\$1,684.75	\$1,089.58	\$280.05	n/a	\$152.06	\$468.61	\$72.92
Ave. Benefit/Person	\$308.91	\$236.40	\$603.51	\$1,221.73	\$577.97	\$280.05	n/a	\$152.06	\$197.91	\$47.00
Ave. Monthly Caseload	16,064	1,973	1,314	30	387	189	139,331	10,937	36,973	9,619
Ave. Monthly Recipients	16,064	5,324	2,049	43	1,000	189	240,896	10,937	83,063	14,941
Ave. Household Size	1.00	2.69	2.90	1.45	2.66	1.00	1.73	1.00	2.37	n/a
Ave. Monthly Initial Apps	769	455	114	992	544	12	3,707	427	2,839	n/a

## DPA Statewide Profile – SFY 2021

### Average Monthly Demographics

	APA		ATAP		CC <sup>5</sup>		HAP		ME		SB		SNAP	
Family Size														
Family Size 1	16,064	100.0%	365	18.5%	18	1.4%	166	43.0%	96,178	69.0%	8,709	79.6%	19,211	51.7%
Family Size 2	n/a		725	36.7%	539	41.0%	80	20.6%	16,513	11.9%	2,229	20.4%	5,663	15.3%
Family Size 3	n/a		432	21.9%	424	32.3%	42	10.8%	10,729	7.7%	0	0.0%	3,906	10.5%
Family Size 4	n/a		236	12.0%	204	15.5%	33	8.4%	7,395	5.3%	0	0.0%	3,079	8.3%
Family Size 5	n/a		110	5.6%	89	6.8%	26	6.6%	4,290	3.1%	0	0.0%	2,138	5.8%
Family Size 6	n/a		60	3.0%	31	2.4%	19	4.9%	2,211	1.6%	0	0.0%	1,352	3.6%
Family Size 7	n/a		24	1.2%	6	0.5%	10	2.6%	1,088	0.8%	0	0.0%	788	2.1%
Family Size 8 or more	n/a		21	1.1%	3	0.2%	12	3.1%	927	0.7%	0	0.0%	992	2.7%
Adults and Children														
Adults	16,040	99.9%	1,671	31.4%	n/a		610	60.9%	141,471	58.7%	10,937	100.0%	48,925	58.9%
Children 18/ Under	24	0.1%	3,653	68.6%	2,049	100.0%	391	39.1%	99,425	41.3%	n/a		34,138	41.1%
Relationship														
Primary	16,064	100.0%	1,385	26.0%	n/a		n/a		n/a		10,937	100.0%	37,103	44.7%
Spouse	n/a		169	3.2%	n/a		n/a		n/a		n/a		4,797	5.8%
Child	n/a		3,212	60.3%	n/a		n/a		n/a		n/a		34,323	41.3%
Other Related	n/a		132	2.5%	n/a		n/a		n/a		n/a		3,514	4.2%
Not Related	n/a		426	8.0%	n/a		n/a		n/a		n/a		3,327	4.0%
Gender														
Female	8,679	54.0%	2,962	55.6%	991	48.4%	484	48.4%	121,803	50.6%	6,226	56.9%	42,794	51.5%
Male	7,385	46.0%	2,362	44.4%	1,058	51.6%	517	51.6%	119,093	49.4%	4,711	43.1%	40,269	48.5%
Race and Ethnicity														
White	6,978	43.4%	2,051	38.5%	910	44.4%	330	32.9%	94,717	39.3%	n/a		23,508	28.3%
Alaska Native	4,560	28.4%	755	14.2%	75	3.7%	228	22.8%	76,911	31.9%	n/a		34,192	41.2%
Black	879	5.5%	534	10.0%	156	7.6%	19	1.9%	8,833	3.7%	n/a		3,653	4.4%
American Indian	144	0.9%	22	0.4%	8	0.4%	7	0.7%	2,042	0.8%	n/a		460	0.6%
Asian	1,542	9.6%	209	3.9%	44	2.1%	70	7.0%	12,322	5.1%	n/a		4,008	4.8%
Pacific Islander	483	3.0%	585	11.0%	50	2.4%	10	0.9%	9,454	3.9%	n/a		4,559	5.5%
Hispanic	344	2.1%	88	1.6%	70	3.4%	23	2.3%	5,278	2.2%	n/a		1,253	1.5%
Two or More Races	810	5.0%	996	18.7%	663	32.4%	13	1.3%	14,652	6.1%	n/a		10,183	12.3%
No Race Given	324	2.0%	84	1.6%	73	3.6%	302	30.2%	16,687	6.9%	n/a		1,248	1.5%
Age														
0 to 2 years	n/a		709	13.3%	551	26.9%	37	3.7%	15,101	6.3%	n/a		5,605	6.7%
3 to 4 years	n/a		441	8.3%	632	30.8%	35	3.5%	11,323	4.7%	n/a		3,999	4.8%
5 to 12 years	n/a		1,563	29.4%	866	42.3%	179	17.9%	44,539	18.5%	n/a		15,375	18.5%
13 to 18 years	24	0.1%	940	17.7%	0.00	0.00%	139	13.9%	28,462	11.8%	n/a		9,160	11.0%
19 to 29 years	1,428	8.9%	563	10.6%	n/a		82	8.2%	39,699	16.5%	n/a		10,437	12.6%
30 to 39 years	1,668	10.4%	649	12.2%	n/a		109	10.9%	36,045	15.0%	n/a		12,222	14.7%
40 to 49 years	1,500	9.3%	335	6.3%	n/a		92	9.2%	22,408	9.3%	n/a		8,079	9.7%
50 to 59 years	2,806	17.5%	111	2.1%	n/a		111	11.1%	20,638	8.6%	n/a		8,419	10.1%
60 to 64 years	2,074	12.9%	13	0.2%	n/a		72	7.2%	9,880	4.1%	n/a		4,037	4.9%
65 to 74 years	4,203	26.2%	1	0.0%	n/a		99	9.9%	8,342	3.5%	6,657	60.9%	4,193	5.0%
75 to 84 years	1,777	11.1%	0	0.0%	n/a		36	3.6%	3,267	1.4%	3,059	28.0%	1,263	1.5%
85 to 94 years	531	3.3%	0	0.0%	n/a		8	0.8%	1,069	0.4%	1,130	10.3%	263	0.3%
95 to 99 years	40	0.2%	0	0.0%	n/a		1	0.1%	100	0.0%	75	0.7%	10	0.0%
100 + years	14	0.1%	0	0.0%	n/a		0	0.0%	24	0.0%	19	0.2%	2	0.0%
Families With Earnings														
Cases with Earnings	404		294		n/a		n/a		n/a		n/a		8,107	
Avg. Earnings for above	\$640.80		\$1,139.66		n/a		n/a		n/a		n/a		\$1,631.50	

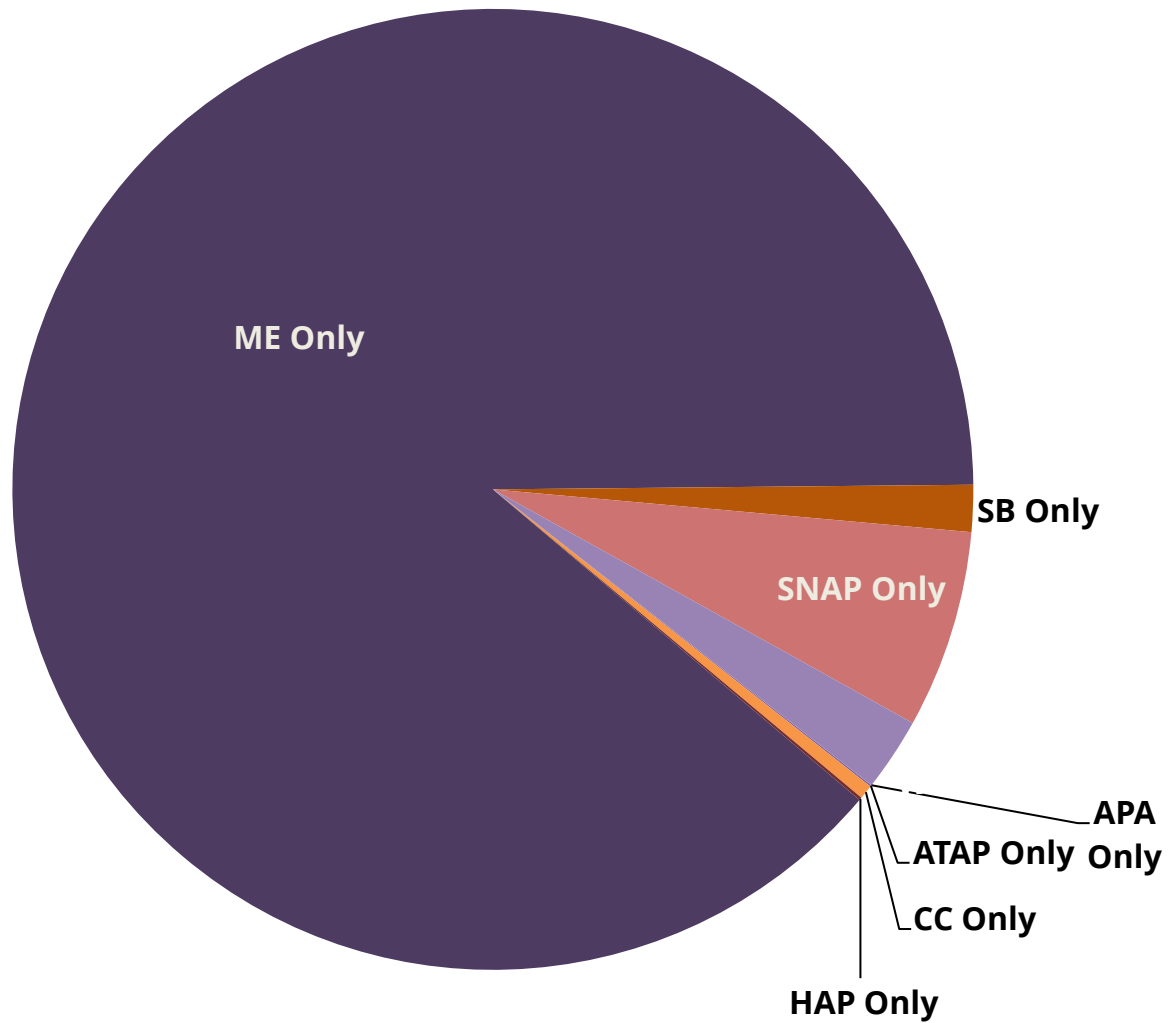
**DPA Statewide Profile - SFY 2021**  
**Average Monthly Caseloads & Benefits by Census Area**

Census Area <sup>6</sup>	APA		ATAP		CC <sup>5</sup>		HAP		ME	SB		SNAP	
	Caseload	Benefits	Caseload	Benefits	Caseload	Benefits	Caseload	Benefits	Caseload	Caseload	Benefits	Caseload	Benefits
Aleutians East	13	\$4,572	< 5	\$935	0	\$0	< 5	\$41	254	18	\$2,330	74	\$58,188
Aleutians West	23	\$7,293	< 5	\$2,063	0	\$0	< 5	\$358	294	18	\$2,976	71	\$51,010
Anchorage	7,060	\$2,220,632	954	\$639,344	591	\$56,681	72	\$58,158	54,480	4,185	\$684,941	14,384	\$6,798,297
Bethel	514	\$155,615	< 5	\$127	0	\$0	< 5	\$1,196	5,302	470	\$77,303	2,091	\$2,553,715
Bristol Bay	17	\$5,660	0	\$0	0	\$0	0	\$0	139	7	\$1,086	39	\$20,017
Denali	22	\$7,329	< 5	\$1,211	< 5	\$101	< 5	\$1,210	185	16	\$2,916	47	\$31,219
Dillingham	164	\$51,921	< 5	\$657	0	\$0	0	\$0	1,451	84	\$9,761	455	\$481,963
Fairbanks North Star	1,469	\$467,647	131	\$85,045	147	\$15,884	54	\$74,326	13,771	902	\$140,796	2,999	\$1,364,883
Haines	62	\$18,227	< 5	\$402	< 5	\$239	< 5	\$1,843	548	86	\$12,969	89	\$33,800
Hoonah/Angoon	62	\$19,271	< 5	\$1,012	0	\$0	< 5	\$1,031	544	80	\$12,400	173	\$106,266
Juneau	659	\$212,169	44	\$27,802	17	\$1,293	6	\$4,297	5,493	335	\$49,405	1,386	\$570,159
Kenai	1,438	\$430,380	206	\$138,838	130	\$12,289	62	\$56,388	12,372	1,226	\$184,203	3,017	\$1,342,188
Ketchikan Gateway	371	\$119,465	33	\$21,124	31	\$2,287	< 5	\$2,571	3,070	260	\$38,527	986	\$411,840
Kodiak	218	\$69,595	20	\$13,460	25	\$2,202	5	\$5,129	2,159	191	\$33,548	437	\$201,124
Kusilvak	210	\$62,883	0	\$0	0	\$0	< 5	\$69	2,627	188	\$31,116	1,192	\$1,637,050
Lake and Peninsula	25	\$7,931	0	\$0	0	\$0	< 5	\$1,169	411	26	\$3,295	133	\$119,315
Mat-Su	2,262	\$701,675	337	\$233,431	323	\$29,274	83	\$74,546	20,759	1,510	\$228,679	4,928	\$2,374,592
Nome	268	\$85,415	109	\$80,356	< 5	\$34	32	\$125,462	2,569	208	\$31,021	1,037	\$1,079,224
North Slope	52	\$16,363	21	\$15,288	0	\$0	< 5	\$10,003	1,388	23	\$3,034	319	\$329,162
NW Arctic	134	\$37,094	0	\$0	0	\$0	30	\$131,161	1,919	117	\$13,783	688	\$804,231
Petersburg	64	\$19,259	7	\$4,397	16	\$1,722	< 5	\$1,348	722	70	\$10,039	182	\$98,140
Prince of Wales	158	\$47,647	50	\$36,256	< 5	\$196	< 5	\$1,540	1,464	177	\$25,744	454	\$244,162
SE Fairbanks	174	\$60,687	5	\$3,913	0	\$32	10	\$14,481	1,251	181	\$30,317	302	\$186,892
Sitka	153	\$42,538	12	\$7,388	12	\$915	< 5	\$1,416	1,909	92	\$13,909	333	\$130,362
Skagway	< 5	\$1,219	< 5	\$280	0	\$0	< 5	\$839	188	7	\$1,185	16	\$6,595
Valdez/Cordova	172	\$51,999	30	\$20,316	12	\$785	11	\$14,678	1,688	166	\$27,036	372	\$195,779
Wrangell	58	\$16,616	< 5	\$2,409	0	\$0	< 5	\$921	448	65	\$9,868	104	\$41,244
Yakutat	11	\$2,670	0	\$0	0	\$0	0	\$0	118	12	\$1,962	20	\$10,731
Yukon/Koyukuk	231	\$69,976	< 5	\$839	0	\$0	< 5	\$413	1,809	218	\$35,370	644	\$466,091

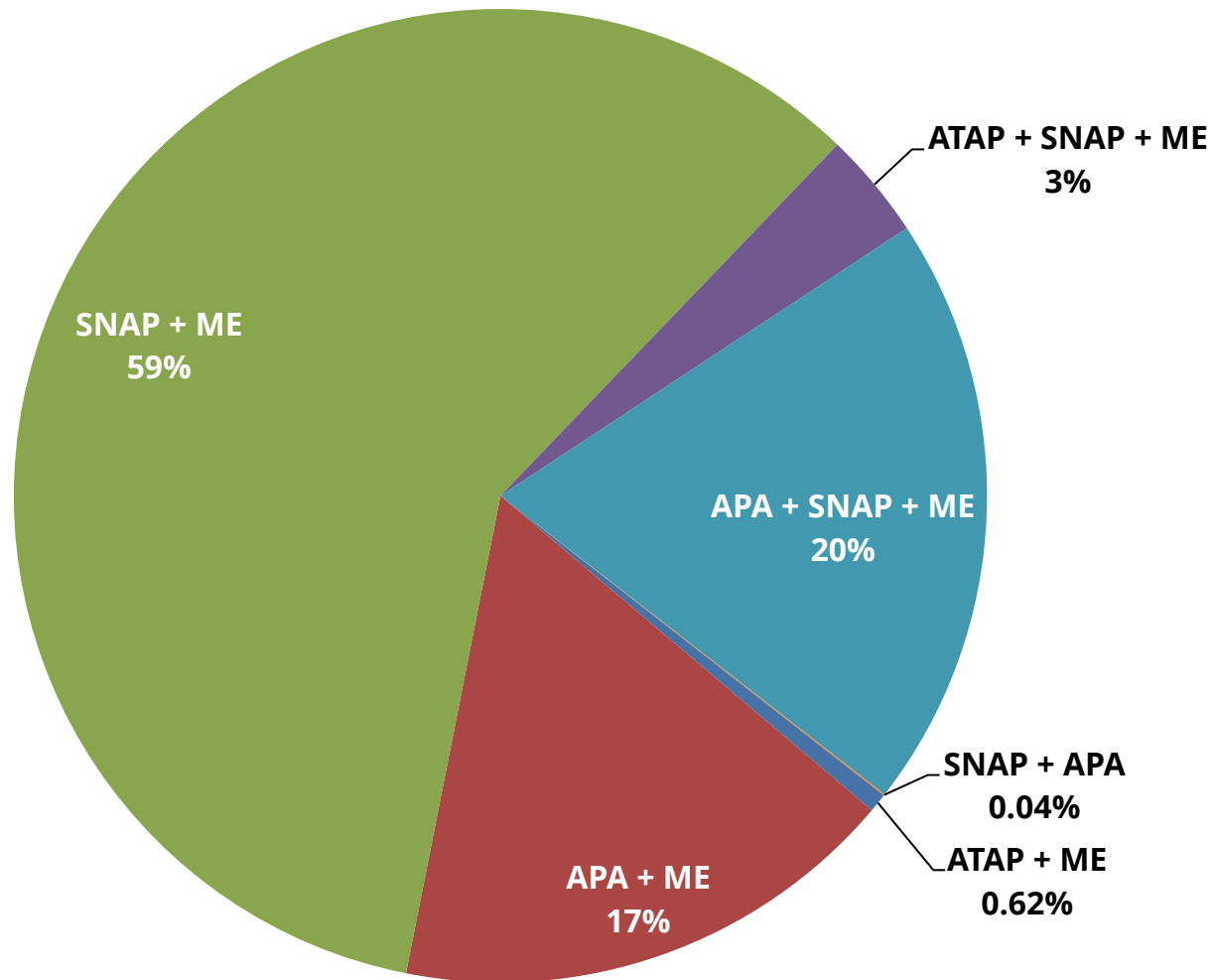
**DPA Statewide Profile – SFY 2021**  
**Individuals On Multiple Programs Or Only on One Program**

Month	ATAP + ME	APA + ME	SNAP + ME	ATAP + SNAP + ME	APA + SNAP + ME	SNAP + APA	APA Only	ATAP Only	CC Only <sup>5</sup>	HAP Only	ME Only	SB Only	SNAP Only	WIC Only
Jul-20	390	7,646	27,044	1,818	9,295	20	0	140	804	2	135,357	2,694	11,537	4,152
Aug-20	418	7,613	27,704	1,833	9,350	20	0	135	773	0	136,154	2,702	11,892	4,079
Sep-20	374	7,627	28,156	1,834	9,287	21	3	117	755	0	137,036	2,693	12,736	4,126
Oct-20	338	7,686	26,062	1,681	9,051	21	4	129	769	0	143,120	2,693	10,999	4,284
Nov-20	287	7,691	24,818	1,596	8,661	19	3	87	790	86	147,902	2,599	10,320	4,184
Dec-20	254	7,878	23,151	1,524	8,021	32	10	91	794	476	153,308	2,581	9,452	4,193
Jan-21	230	7,780	22,747	1,462	7,950	12	2	76	818	277	155,860	2,256	9,312	4,208
Feb-21	219	7,490	24,624	1,507	8,344	27	13	77	784	341	152,944	2,606	10,215	4,159
Mar-21	207	7,280	26,019	1,483	8,544	16	7	78	810	425	151,942	2,609	10,803	4,068
Apr-21	199	7,142	26,884	1,442	8,714	17	6	62	793	241	152,629	2,622	11,175	3,967
#####	195	7,037	27,692	1,370	8,786	15	19	58		72	152,853	2,706	12,232	4,001
Jun-21	189	6,923	28,320	1,318	8,877	16	15	50		45	153,249	2,704	12,533	3,992

## Individuals Receiving Only One Program SFY21 Monthly Average



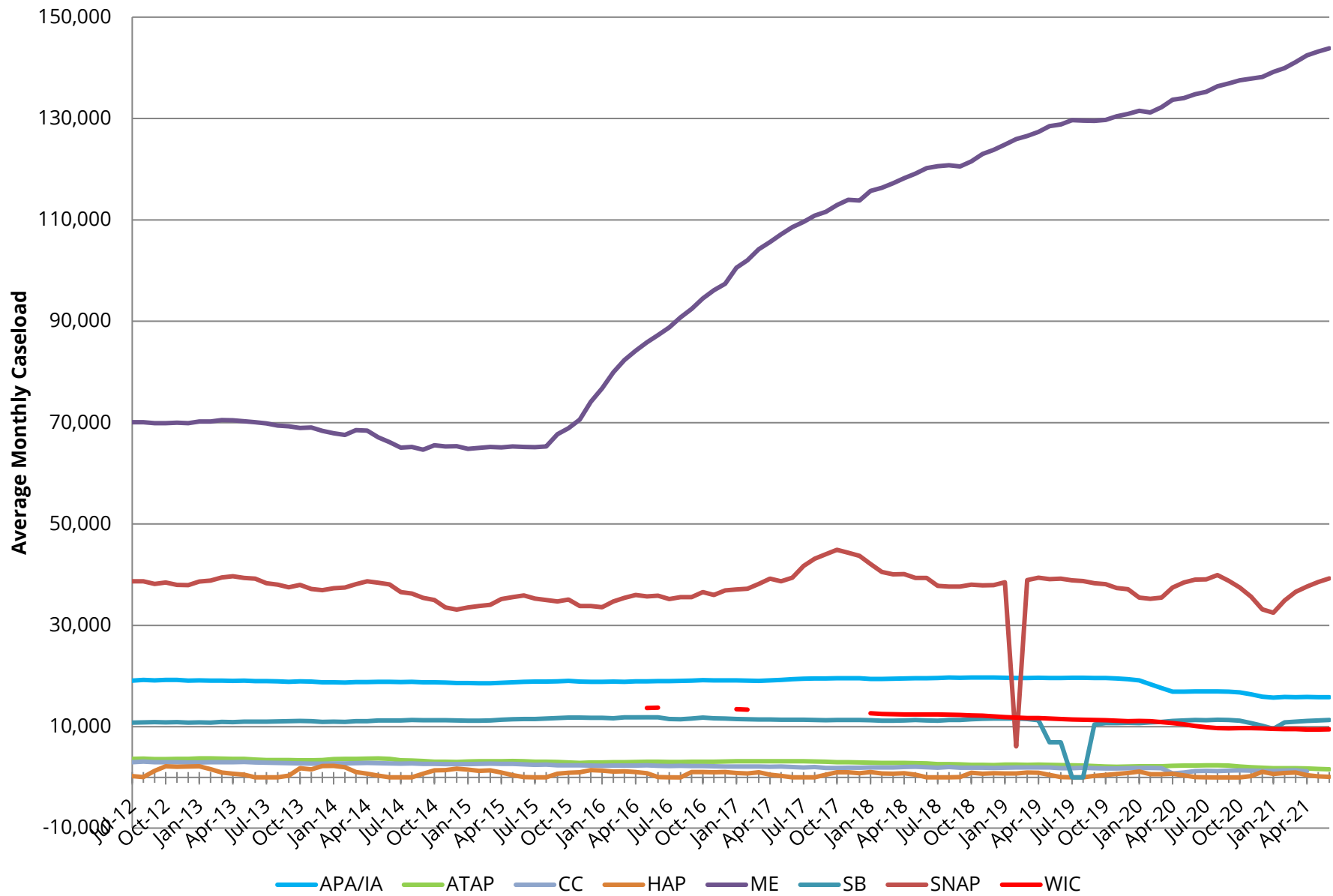
## Individuals Receiving Multiple Programs SFY21 Monthly Average



**DPA Statewide Profile – SFY 2021**  
**Average Monthly Caseload & Benefit History**

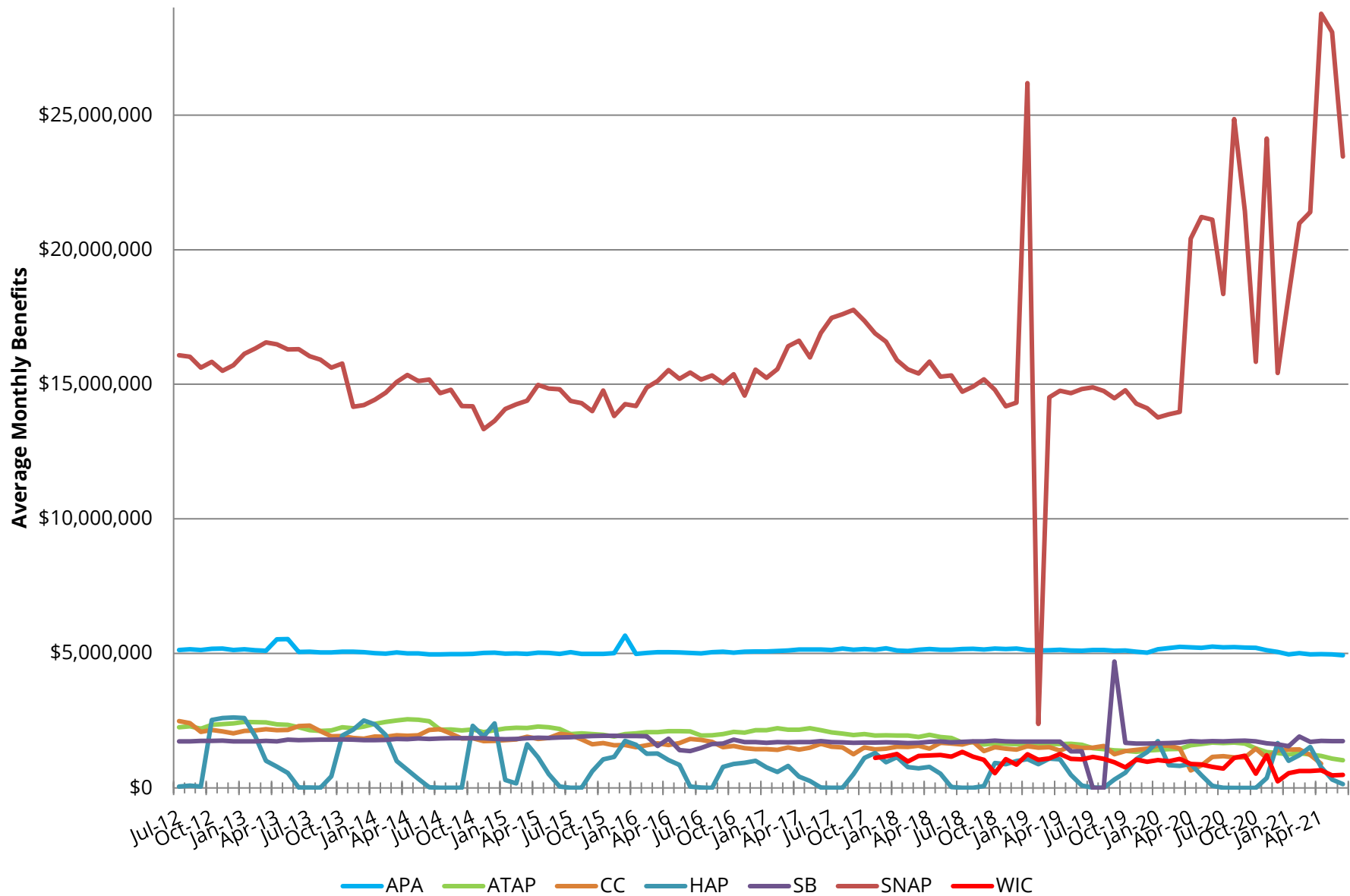
Fiscal Year	APA		ATAP		CC <sup>5</sup>		GA		HAP		ME	SB		SNAP	
	Cases	Benefits	Cases	Benefits	Cases	Benefits	Cases	Benefits	Cases	Benefits	Cases	Cases	Benefits	Cases	Benefits
2011	18,187	\$4,939,803	3,619	\$2,253,102	2,980	\$2,250,934	164	\$165,320	1,218	\$1,208,078	66,327	10,231	\$1,621,804	34,360	\$14,373,393
2012	18,865	\$5,086,401	3,804	\$2,330,784	3,174	\$2,384,297	179	\$193,636	1,056	\$1,125,793	69,579	10,595	\$1,688,400	38,020	\$15,494,987
2013	19,124	\$5,122,428	3,661	\$2,288,479	3,001	\$2,191,905	174	\$206,511	1,043	\$1,234,634	70,136	10,884	\$1,747,163	38,760	\$15,849,233
2014	18,853	\$5,028,630	3,547	\$2,247,811	2,798	\$1,981,817	174	\$240,370	1,007	\$1,118,948	68,377	11,082	\$1,800,246	37,838	\$14,880,579
2015	18,684	\$5,001,428	3,195	\$2,103,963	2,668	\$1,878,878	161	\$263,791	916	\$869,595	65,266	11,305	\$1,842,954	34,837	\$14,106,673
2016	18,925	\$5,056,396	3,020	\$1,984,085	2,377	\$1,972,933	164	\$259,901	811	\$889,849	75,667	11,750	\$1,794,603	34,920	\$14,654,849
2017	19,142	\$5,079,879	3,133	\$2,063,746	2,179	\$1,534,861	128	\$126,798	644	\$542,064	98,721	11,525	\$1,682,694	37,134	\$15,647,614
2018	19,369	\$5,082,565	2,956	\$1,912,329	1,966	\$1,506,991	103	\$86,975	609	\$655,369	114,955	11,283	\$1,692,937	41,945	\$16,416,289
2019	19,461	\$5,139,624	2,518	\$1,643,861	2,220	\$1,506,224	94	\$76,489	547	\$629,799	124,347	10,692	\$1,666,897	35,694	\$14,620,799
2020	18,388	\$5,075,278	2,250	\$1,469,044	1,619	\$1,317,761	77	\$64,024	501	\$678,809	131,451	10,895	\$1,657,344	37,471	\$15,970,205
2021	16,064	\$5,013,749	1,973	\$1,347,490	1,314	\$1,239,235	30	\$50,100	387	\$584,592	139,331	10,937	\$1,719,517	36,973	\$21,748,239

## DPA Caseload History





## DPA Benefits History<sup>7</sup>

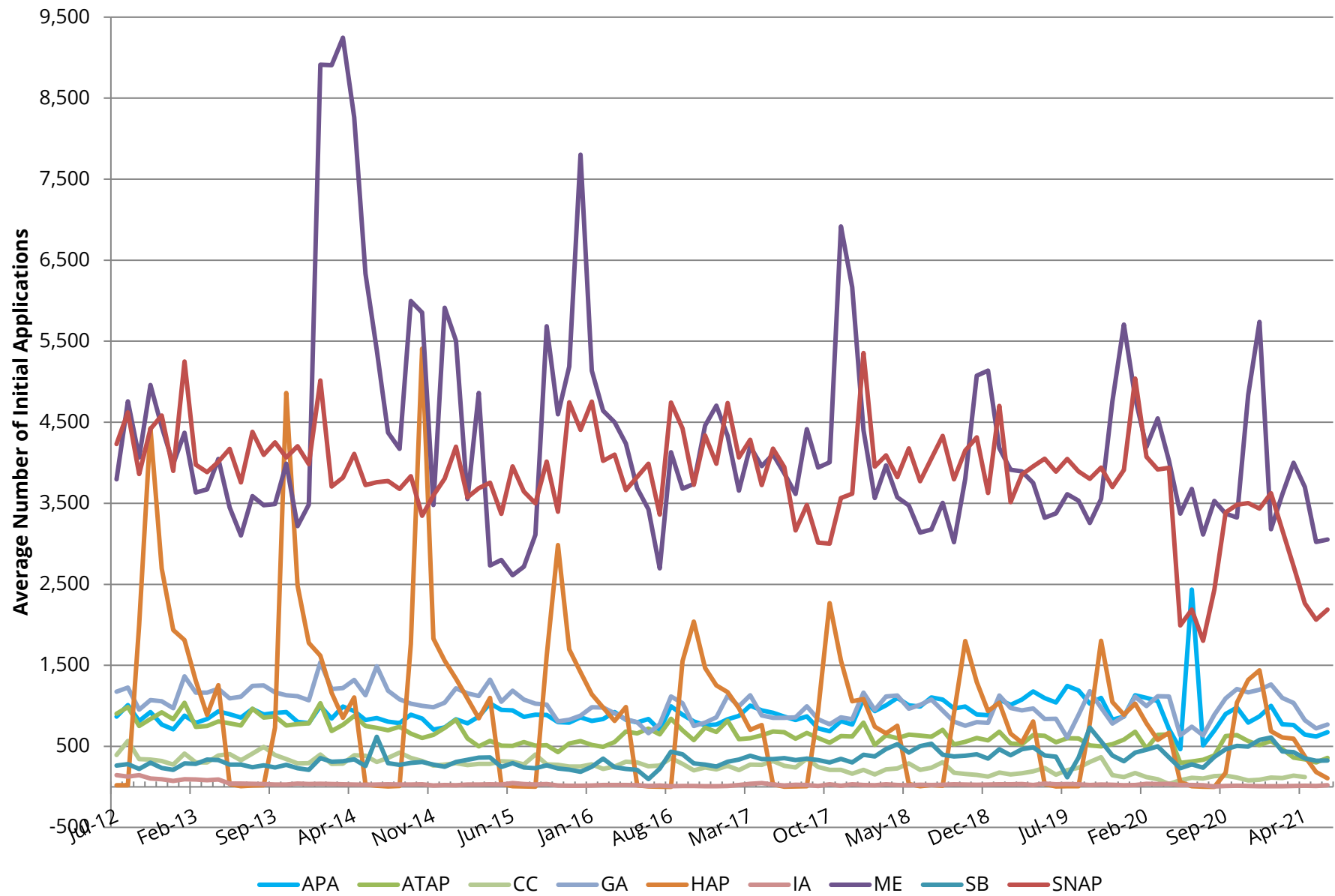


**DPA Statewide Profile – SFY 2021**  
**Average Monthly Initial Applications**

Fiscal Year	APA	ATAP	CC <sup>5</sup>	GA	HAP	IA	ME*	SB	SNAP
2011	728	805	488	1,084	1,444	195	3,527	284	3,994
2012	741	847	400	1,136	1,300	175	3,524	274	4,227
2013	857	843	364	1,130	1,366	93	4,023	275	4,222
2014	893	820	356	1,240	1,004	33	5,692	305	4,093
2015	848	631	313	1,114	1,102	29	4,321	300	3,714
2016	844	561	278	901	972	22	4,561	227	4,005
2017	864	681	263	930	905	19	3,961	329	4,127
2018	901	624	227	957	760	24	4,265	387	3,751
2019	1,033	595	185	905	672	30	3,846	417	4,021
2020	940	531	167	919	639	29	4,087	394	3,704
2021	769	455	114	992	544	12	3,707	427	2,839

*\* As of October 2014, Medicaid applications include initial applications for service and recertifications converting to MAGI methodology.*

## DPA Initial Applications History



**DPA Statewide Profile - SFY 2021**  
**Average Monthly Caseloads & Benefits by City of Residence**

Community	APA		ATAP		CC <sup>5</sup>		HAP		ME	SB		SNAP	
	Cases	Benefits	Cases	Benefits	Cases	Benefits	Cases	Benefits	Cases	Cases	Benefits	Cases	Benefits
ADAK	< 5	\$504	0	\$0	0	\$0	0	\$0	34	< 5	\$273	< 5	\$1,209
AKHIOK	< 5	\$298	0	\$0	0	\$0	< 5	\$1,320	39	0	\$0	5	\$3,636
AKIACHAK	31	\$10,780	0	\$0	0	\$0	0	\$0	633	25	\$4,314	130	\$159,675
AKIAK	14	\$4,095	0	\$0	0	\$0	0	\$0	376	11	\$2,053	67	\$86,761
AKUTAN	< 5	\$538	0	\$0	0	\$0	0	\$0	36	< 5	\$579	< 5	\$2,457
ALAKANUK	16	\$4,940	0	\$0	0	\$0	0	\$0	637	15	\$3,110	106	\$139,361
ALEKNAGIK	5	\$1,618	0	\$0	0	\$0	0	\$0	85	5	\$461	12	\$9,958
ALEXANDER CREEK	< 5	\$528	0	\$0	0	\$0	< 5	\$990	< 5	< 5	\$385	0	\$0
ALLAKAKET	10	\$2,654	0	\$0	0	\$0	0	\$0	142	9	\$1,200	26	\$22,871
AMBLER	< 5	\$1,054	0	\$0	0	\$0	< 5	\$11,739	204	< 5	\$171	30	\$38,434
ANAKTUVUK PASS	< 5	\$504	< 5	\$270	0	\$0	0	\$0	215	< 5	\$146	16	\$17,174
ANCHOR POINT	73	\$22,624	8	\$4,548	< 5	\$1,756	7	\$5,371	1,019	99	\$14,825	148	\$64,370
ANCHORAGE	6,775	\$2,129,313	904	\$596,949	551	\$523,629	89	\$71,577	81,962	3,989	\$655,185	13,805	\$6,523,316
ANDERSON	5	\$1,622	0	\$0	0	\$0	< 5	\$2,063	55	< 5	\$481	10	\$8,196
ANGOON	22	\$7,509	< 5	\$387	0	\$0	0	\$0	270	22	\$3,510	55	\$37,218
ANIAK	7	\$1,967	0	\$0	0	\$0	0	\$0	254	10	\$1,595	46	\$47,417
ANVIK	< 5	\$84	0	\$0	0	\$0	0	\$0	51	< 5	\$399	8	\$7,429
ARCTIC VILLAGE	7	\$2,387	0	\$0	0	\$0	0	\$0	137	7	\$1,483	39	\$27,045
ATKA	< 5	\$386	0	\$0	0	\$0	0	\$0	22	< 5	\$706	7	\$3,029
ATKASUK	0	\$0	0	\$0	0	\$0	0	\$0	14	0	\$0	0	\$0
ATMAUTLUAK	14	\$3,802	0	\$0	0	\$0	0	\$0	349	20	\$3,674	51	\$77,016
ATQASUK	< 5	\$98	0	\$0	0	\$0	< 5	\$3,795	89	0	\$0	< 5	\$2,347
AUKE BAY	< 5	\$294	0	\$0	< 5	\$1,200	< 5	\$660	28	< 5	\$177	< 5	\$814
BARROW	44	\$14,416	8	\$6,586	0	\$0	5	\$5,495	1,593	15	\$2,039	191	\$180,091
BEAVER	< 5	\$667	0	\$0	0	\$0	0	\$0	44	< 5	\$609	8	\$5,910
BETHEL	101	\$30,811	0	\$0	0	\$0	< 5	\$1,815	2,740	74	\$12,124	452	\$414,479
BETTLES	< 5	\$362	0	\$0	0	\$0	0	\$0	6	< 5	\$175	< 5	\$550
BIG LAKE	116	\$37,349	24	\$15,287	9	\$5,902	9	\$7,549	1,507	72	\$11,021	241	\$112,046
BIRCH CREEK	< 5	\$513	0	\$0	0	\$0	0	\$0	11	< 5	\$250	< 5	\$1,508
BREVIG MISSION	16	\$4,260	8	\$5,790	0	\$0	< 5	\$7,755	376	8	\$1,266	55	\$70,969
BUCKLAND	8	\$2,240	0	\$0	0	\$0	6	\$26,388	376	5	\$531	45	\$59,650
CANTWELL	< 5	\$354	< 5	\$925	0	\$0	< 5	\$1,595	35	< 5	\$484	9	\$4,653
CENTRAL	5	\$618	0	\$0	0	\$0	0	\$0	28	11	\$1,670	10	\$6,365
CHALKYITSIK	< 5	\$990	0	\$0	0	\$0	0	\$0	36	< 5	\$166	10	\$6,332
CHASE	0	\$0	0	\$0	0	\$0	0	\$0	< 5	0	\$0	< 5	\$363

**DPA Statewide Profile - SFY 2021**  
**Average Monthly Caseloads & Benefits by City of Residence**

Community	APA		ATAP		CC <sup>5</sup>		HAP		ME	SB		SNAP	
	Cases	Benefits	Cases	Benefits	Cases	Benefits	Cases	Benefits	Cases	Cases	Benefits	Cases	Benefits
CHEFORNAK	20	\$4,976	0	\$0	0	\$0	0	\$0	420	23	\$3,502	53	\$78,202
CHENEGA	< 5	\$362	0	\$0	0	\$0	0	\$0	17	0	\$0	0	\$0
CHENEGA BAY	0	\$0	0	\$0	0	\$0	< 5	\$825	0	0	\$0	0	\$0
CHEVAK	30	\$8,290	0	\$0	0	\$0	0	\$0	877	23	\$3,272	129	\$194,559
CHICKALOON	7	\$1,872	< 5	\$503	< 5	\$394	< 5	\$880	46	8	\$1,246	8	\$3,712
CHICKEN	< 5	\$200	0	\$0	0	\$0	0	\$0	< 5	< 5	\$175	< 5	\$211
CHIGNIK	0	\$0	0	\$0	0	\$0	0	\$0	37	< 5	\$120	< 5	\$2,032
CHIGNIK LAGOON	< 5	\$362	0	\$0	0	\$0	0	\$0	31	0	\$0	< 5	\$3,787
CHIGNIK LAKE	0	\$0	0	\$0	0	\$0	0	\$0	39	0	\$0	5	\$4,267
CHINIAK	< 5	\$571	0	\$0	0	\$0	< 5	\$660	31	< 5	\$457	< 5	\$2,012
CHISTOCHINA	< 5	\$569	< 5	\$762	0	\$0	0	\$0	26	< 5	\$386	7	\$3,263
CHITINA	8	\$2,441	0	\$0	0	\$0	< 5	\$2,145	97	6	\$1,029	12	\$9,435
CHUATHBALUK	< 5	\$622	0	\$0	0	\$0	0	\$0	69	5	\$766	16	\$17,545
CHUGIAK	93	\$28,521	17	\$10,555	6	\$5,980	5	\$3,807	1,687	75	\$10,847	197	\$96,313
CIRCLE	< 5	\$967	0	\$0	0	\$0	0	\$0	67	< 5	\$639	18	\$9,764
CIRCLE HOT SPRG	0	\$0	0	\$0	0	\$0	0	\$0	< 5	0	\$0	0	\$0
CLAM GULCH	9	\$2,630	< 5	\$1,361	< 5	\$679	< 5	\$2,079	162	11	\$2,092	21	\$12,331
CLARKS POINT	< 5	\$1,185	0	\$0	0	\$0	0	\$0	49	2	\$251	8	\$6,547
CLEAR	6	\$2,234	0	\$0	0	\$0	0	\$0	17	< 5	\$408	6	\$4,642
COFFMAN COVE	< 5	\$697	< 5	\$476	0	\$0	< 5	\$825	61	< 5	\$275	8	\$6,056
COLD BAY	0	\$0	0	\$0	0	\$0	0	\$0	< 5	0	\$0	0	\$0
COLDFOOT	0	\$0	0	\$0	0	\$0	0	\$0	< 5	0	\$0	0	\$0
COLLEGE	0	\$0	0	\$0	0	\$0	< 5	\$1,155	< 5	0	\$0	0	\$0
COOPER LANDING	< 5	\$603	< 5	\$923	0	\$0	< 5	\$1,485	69	7	\$1,003	11	\$2,828
COPPER CENTER	31	\$8,838	< 5	\$1,988	0	\$0	6	\$8,044	368	28	\$3,502	73	\$40,174
CORDOVA	34	\$10,245	< 5	\$982	5	\$2,416	< 5	\$2,503	617	33	\$6,289	63	\$30,485
CRAIG	28	\$7,712	< 5	\$785	< 5	\$1,956	< 5	\$1,279	531	25	\$3,404	70	\$29,931
CROOKED CREEK	< 5	\$362	0	\$0	0	\$0	< 5	\$6,270	79	0	\$0	17	\$15,035
DEERING	< 5	\$795	0	\$0	0	\$0	< 5	\$7,013	107	< 5	\$267	13	\$13,871
DELTA JUNCTION	92	\$33,232	< 5	\$2,866	0	\$0	10	\$14,667	1,478	90	\$15,466	123	\$65,718
DENALI NATIONAL	0	\$0	0	\$0	0	\$0	0	\$0	33	0	\$0	0	\$0
DENALI NATL PK	0	\$0	0	\$0	0	\$0	0	\$0	< 5	< 5	\$76	0	\$0
DENALI PARK	0	\$0	0	\$0	0	\$0	< 5	\$660	0	0	\$0	0	\$0
DILLINGHAM	41	\$12,773	< 5	\$788	0	\$0	0	\$0	862	9	\$1,293	116	\$94,748
DIOMEDE	< 5	\$1,238	< 5	\$782	0	\$0	< 5	\$1,320	46	< 5	\$76	13	\$10,170

**DPA Statewide Profile - SFY 2021**  
**Average Monthly Caseloads & Benefits by City of Residence**

Community	APA		ATAP		CC <sup>5</sup>		HAP		ME	SB		SNAP	
	Cases	Benefits	Cases	Benefits	Cases	Benefits	Cases	Benefits	Cases	Cases	Benefits	Cases	Benefits
DOT LAKE	< 5	\$1,051	0	\$0	0	\$0	0	\$0	20	< 5	\$114	< 5	\$911
DOUGLAS	41	\$13,172	< 5	\$1,084	< 5	\$867	< 5	\$660	528	26	\$3,347	98	\$53,692
DUTCH HARBOR	< 5	\$855	0	\$0	0	\$0	< 5	\$825	127	< 5	\$338	9	\$7,865
EAGLE	6	\$2,481	0	\$0	0	\$0	0	\$0	65	5	\$1,063	19	\$10,344
EAGLE RIVER	162	\$54,227	30	\$20,003	30	\$29,953	< 5	\$3,677	3,451	102	\$16,142	326	\$154,349
EAGLE VILLAGE	0	\$0	0	\$0	0	\$0	0	\$0	< 5	0	\$0	0	\$0
EDNA BAY	< 5	\$789	0	\$0	0	\$0	0	\$0	19	8	\$893	< 5	\$837
EEK	12	\$3,484	0	\$0	0	\$0	0	\$0	266	14	\$2,558	46	\$55,456
EGEGIK	< 5	\$362	0	\$0	0	\$0	0	\$0	11	< 5	\$191	< 5	\$1,581
EIELSON AFB	0	\$0	0	\$0	0	\$0	0	\$0	51	0	\$0	< 5	\$659
EKLUTNA	0	\$0	0	\$0	0	\$0	0	\$0	< 5	0	\$0	0	\$0
EKUK	0	\$0	0	\$0	0	\$0	0	\$0	< 5	0	\$0	0	\$0
EKWOK	< 5	\$1,476	0	\$0	0	\$0	0	\$0	67	< 5	\$460	15	\$10,213
ELFIN COVE	0	\$0	0	\$0	0	\$0	0	\$0	5	0	\$0	< 5	\$474
ELIM	8	\$3,005	5	\$3,434	0	\$0	< 5	\$7,343	252	5	\$798	35	\$46,625
ELMENDORF AFB	< 5	\$362	0	\$0	0	\$0	0	\$0	21	0	\$0	0	\$0
EMMONAK	14	\$4,164	0	\$0	0	\$0	0	\$0	682	17	\$2,680	101	\$131,259
ENGLISH BAY	0	\$0	0	\$0	0	\$0	< 5	\$880	0	0	\$0	0	\$0
ESTER	< 5	\$604	0	\$0	1	\$523	< 5	\$1,199	63	9	\$1,323	10	\$3,546
FAIRBANKS	1,167	\$369,140	104	\$66,540	105	\$116,040	47	\$62,289	17,187	699	\$108,513	2,393	\$1,060,978
FALSE PASS	0	\$0	0	\$0	0	\$0	0	\$0	14	0	\$0	0	\$0
FORT GREELY	0	\$0	0	\$0	0	\$0	0	\$0	13	0	\$0	0	\$0
FORT RICHARDSON	0	\$0	0	\$0	0	\$0	0	\$0	44	0	\$0	< 5	\$1,443
FORT YUKON	33	\$10,880	0	\$0	0	\$0	0	\$0	354	31	\$4,529	116	\$73,881
FORTUNA LEDGE	< 5	\$362	0	\$0	0	\$0	0	\$0	6	0	\$0	0	\$0
FOX	< 5	\$539	0	\$0	0	\$0	0	\$0	< 5	0	\$0	< 5	\$780
FRITZ CREEK	< 5	\$1,260	< 5	\$1,156	< 5	\$1,299	< 5	\$1,073	56	10	\$2,030	7	\$1,839
FT WAINWRIGHT	< 5	\$2,186	< 5	\$568	< 5	\$2,046	0	\$0	138	< 5	\$399	13	\$7,378
GAKONA	< 5	\$1,006	< 5	\$1,642	0	\$0	< 5	\$4,455	106	9	\$1,495	16	\$5,880
GALENA	7	\$1,043	0	\$0	0	\$0	0	\$0	225	14	\$2,221	20	\$14,753
GAMBELL	32	\$10,842	29	\$21,912	0	\$0	11	\$49,830	479	29	\$4,685	117	\$120,395
GIRDWOOD	7	\$1,940	< 5	\$1,483	< 5	\$1,851	0	\$0	481	6	\$700	26	\$10,255
GLENNALLEN	12	\$3,860	< 5	\$1,367	0	\$0	< 5	\$5,610	411	22	\$4,075	45	\$22,702
GOLOVIN	< 5	\$509	0	\$0	0	\$0	< 5	\$3,548	67	< 5	\$245	9	\$6,958
GOODNEWS BAY	11	\$3,083	0	\$0	0	\$0	0	\$0	232	6	\$1,108	37	\$45,514

**DPA Statewide Profile - SFY 2021**  
**Average Monthly Caseloads & Benefits by City of Residence**

Community	APA		ATAP		CC <sup>5</sup>		HAP		ME	SB		SNAP	
	Cases	Benefits	Cases	Benefits	Cases	Benefits	Cases	Benefits	Cases	Cases	Benefits	Cases	Benefits
GRAYLING	7	\$2,398	0	\$0	0	\$0	0	\$0	161	6	\$1,340	28	\$26,097
GULKANA	< 5	\$836	0	\$0	0	\$0	0	\$0	24	< 5	\$175	5	\$3,460
GUSTAVUS	< 5	\$948	0	\$0	0	\$0	< 5	\$1,683	150	15	\$2,608	19	\$10,341
HAINES	62	\$18,227	< 5	\$536	< 5	\$2,387	< 5	\$3,159	895	86	\$12,969	89	\$33,800
HALIBUT COVE	0	\$0	0	\$0	0	\$0	0	\$0	12	0	\$0	< 5	\$241
HEALY	10	\$3,059	< 5	\$517	< 5	\$1,261	< 5	\$1,238	176	8	\$1,478	22	\$13,728
HEALY LAKE	< 5	\$362	0	\$0	0	\$0	< 5	\$1,650	13	0	\$0	< 5	\$2,380
HOLLIS	< 5	\$942	0	\$0	0	\$0	0	\$0	52	< 5	\$577	15	\$8,412
HOLY CROSS	9	\$1,833	0	\$0	0	\$0	0	\$0	121	11	\$1,731	35	\$26,871
HOMER	204	\$57,267	19	\$11,090	10	\$7,972	14	\$12,953	3,746	221	\$32,927	372	\$154,320
HOONAH	28	\$7,898	< 5	\$206	0	\$0	0	\$0	426	26	\$3,450	83	\$51,733
HOOPER BAY	26	\$7,956	0	\$0	0	\$0	0	\$0	1,191	20	\$3,477	199	\$287,870
HOPE	< 5	\$362	0	\$0	0	\$0	< 5	\$866	43	5	\$956	< 5	\$1,546
HOUSTON	84	\$25,595	11	\$6,823	< 5	\$2,206	< 5	\$3,335	881	34	\$5,029	170	\$82,604
HUGHES	< 5	\$831	0	\$0	0	\$0	0	\$0	64	< 5	\$371	5	\$5,984
HUSLIA	7	\$2,575	0	\$0	0	\$0	0	\$0	217	6	\$515	28	\$26,869
HYDABURG	18	\$5,666	0	\$0	0	\$0	0	\$0	217	11	\$1,473	53	\$29,633
HYDER	< 5	\$1,064	0	\$0	0	\$0	< 5	\$825	37	8	\$846	< 5	\$743
IGIUGIG	< 5	\$845	0	\$0	0	\$0	0	\$0	13	0	\$0	< 5	\$1,075
ILIAMNA	0	\$0	0	\$0	0	\$0	0	\$0	106	< 5	\$569	25	\$24,083
INDIAN	< 5	\$300	0	\$0	0	\$0	< 5	\$495	52	0	\$0	7	\$2,747
JBER	5	\$1,330	0	\$0	< 5	\$5,004	0	\$0	138	< 5	\$470	10	\$6,497
JUNEAU	617	\$198,758	42	\$26,171	15	\$11,760	9	\$6,895	7,715	307	\$45,881	1,284	\$514,421
KAKE	13	\$2,851	0	\$0	0	\$0	0	\$0	336	23	\$2,573	56	\$39,171
KAKTOVIK	0	\$0	0	\$0	0	\$0	< 5	\$1,320	72	0	\$0	5	\$4,309
KALSAG (LOWER)	14	\$4,558	0	\$0	0	\$0	0	\$0	272	10	\$1,739	59	\$62,601
KALSAG (UPPER)	11	\$4,709	0	\$0	0	\$0	0	\$0	134	< 5	\$804	25	\$25,638
KALTAG	7	\$2,442	0	\$0	0	\$0	0	\$0	95	6	\$766	17	\$10,934
KARLUK	< 5	\$493	0	\$0	0	\$0	< 5	\$2,805	11	< 5	\$152	< 5	\$1,352
KASAAN	< 5	\$318	< 5	\$484	0	\$0	0	\$0	31	< 5	\$340	8	\$5,265
KASIGLUK	15	\$4,920	0	\$0	0	\$0	0	\$0	538	21	\$2,915	69	\$121,100
KASILOF	85	\$26,783	8	\$5,435	< 5	\$527	8	\$6,765	823	53	\$8,222	148	\$62,132
KENAI	385	\$117,611	63	\$42,275	48	\$49,399	18	\$16,799	5,210	243	\$36,191	864	\$390,685
KENNY LAKE	< 5	\$769	0	\$0	0	\$0	0	\$0	39	< 5	\$575	6	\$3,641
KETCHIKAN	364	\$117,287	33	\$20,588	31	\$22,875	7	\$4,208	4,692	256	\$37,817	974	\$407,337

**DPA Statewide Profile - SFY 2021**  
**Average Monthly Caseloads & Benefits by City of Residence**

Community	APA		ATAP		CC <sup>5</sup>		HAP		ME	SB		SNAP	
	Cases	Benefits	Cases	Benefits	Cases	Benefits	Cases	Benefits	Cases	Cases	Benefits	Cases	Benefits
KIANA	9	\$2,346	0	\$0	0	\$0	< 5	\$17,201	270	9	\$972	38	\$50,948
KING COVE	6	\$1,915	< 5	\$738	0	\$0	0	\$0	185	9	\$1,012	25	\$20,651
KING SALMON	< 5	\$1,529	0	\$0	0	\$0	0	\$0	66	< 5	\$76	8	\$5,130
KIPNUK	27	\$7,012	0	\$0	0	\$0	0	\$0	657	24	\$3,547	103	\$144,238
KIVALINA	6	\$1,974	0	\$0	0	\$0	< 5	\$14,190	338	5	\$754	52	\$65,783
KLAWOCK	30	\$8,740	< 5	\$422	0	\$0	< 5	\$536	422	31	\$3,850	75	\$41,306
KLUKWAN	< 5	\$1,278	0	\$0	0	\$0	0	\$0	16	< 5	\$407	< 5	\$1,467
KOBUK	0	\$0	0	\$0	0	\$0	< 5	\$12,540	125	< 5	\$175	12	\$18,311
KODIAK	197	\$62,690	20	\$13,039	25	\$21,977	5	\$4,043	3,311	178	\$31,768	398	\$176,845
KOKHANOK	7	\$1,972	0	\$0	0	\$0	0	\$0	115	9	\$1,128	21	\$20,718
KOLIGANEK	7	\$2,666	0	\$0	0	\$0	0	\$0	130	6	\$729	20	\$22,583
KONGIGANAK	17	\$5,720	0	\$0	0	\$0	0	\$0	440	19	\$2,617	58	\$84,142
KOTLIK	17	\$5,426	0	\$0	0	\$0	0	\$0	544	18	\$2,894	95	\$136,014
KOTZEBUE	47	\$12,448	0	\$0	0	\$0	8	\$25,457	1,315	44	\$5,131	203	\$185,666
KOYUK	13	\$4,474	< 5	\$1,105	0	\$0	7	\$27,473	231	< 5	\$558	43	\$51,825
KOYUKUK	9	\$2,951	0	\$0	0	\$0	0	\$0	57	5	\$586	10	\$6,853
KWETHLUK	23	\$7,056	< 5	\$949	0	\$0	0	\$0	699	29	\$4,273	115	\$148,420
KWIGILLINGOK	8	\$2,736	0	\$0	0	\$0	0	\$0	307	8	\$1,115	44	\$65,551
LARSEN BAY	< 5	\$570	0	\$0	0	\$0	< 5	\$1,155	22	< 5	\$132	< 5	\$1,038
LEVELOCK	< 5	\$648	0	\$0	0	\$0	0	\$0	49	< 5	\$233	9	\$8,853
LIME VILLAGE	0	\$0	0	\$0	0	\$0	0	\$0	8	< 5	\$250	< 5	\$2,988
LIVENGOOD	< 5	\$1,206	0	\$0	0	\$0	< 5	\$1,320	11	0	\$0	7	\$3,609
MANLEY HOT SPRI	0	\$0	0	\$0	0	\$0	0	\$0	51	0	\$0	0	\$0
MANLEY HOT SPRN	< 5	\$544	< 5	\$931	0	\$0	0	\$0	5	< 5	\$248	7	\$4,921
MANOKOTAK	21	\$7,223	0	\$0	0	\$0	0	\$0	423	10	\$1,003	73	\$84,592
MARSHALL	20	\$5,436	0	\$0	0	\$0	0	\$0	398	15	\$2,545	69	\$83,508
MCCARTHY	0	\$0	0	\$0	0	\$0	0	\$0	20	< 5	\$286	< 5	\$336
MCGRATH	5	\$1,169	< 5	\$609	0	\$0	0	\$0	144	8	\$1,475	17	\$13,301
MEKORYUK	8	\$1,753	0	\$0	0	\$0	0	\$0	129	< 5	\$676	28	\$23,634
MENTASTA LAKE	8	\$2,760	< 5	\$883	0	\$0	< 5	\$2,805	70	5	\$622	16	\$9,795
METLAKATLA	41	\$12,307	45	\$32,943	0	\$0	0	\$0	871	53	\$8,496	155	\$87,053
MEYERS CHUCK	0	\$0	0	\$0	0	\$0	0	\$0	< 5	< 5	\$350	0	\$0
MINTO	8	\$2,341	0	\$0	0	\$0	0	\$0	116	6	\$911	31	\$20,716
MOOSE CREEK	0	\$0	0	\$0	0	\$0	< 5	\$1,705	0	0	\$0	0	\$0
MOOSE PASS	< 5	\$698	0	\$0	0	\$0	< 5	\$495	75	< 5	\$397	7	\$2,769



**DPA Statewide Profile - SFY 2021**  
**Average Monthly Caseloads & Benefits by City of Residence**

Community	APA		ATAP		CC <sup>5</sup>		HAP		ME	SB		SNAP	
	Cases	Benefits	Cases	Benefits	Cases	Benefits	Cases	Benefits	Cases	Cases	Benefits	Cases	Benefits
MOUNTAIN VIEW	0	\$0	0	\$0	0	\$0	0	\$0	8	0	\$0	0	\$0
MT VILLAGE	15	\$5,283	0	\$0	0	\$0	0	\$0	592	16	\$2,838	100	\$125,660
NAKNEK	11	\$3,538	0	\$0	0	\$0	0	\$0	118	< 5	\$797	25	\$11,967
NANWALEK	< 5	\$1,257	< 5	\$1,392	0	\$0	< 5	\$2,145	219	0	\$0	27	\$30,467
NAPAKIAK	28	\$7,163	0	\$0	0	\$0	0	\$0	314	14	\$2,039	79	\$79,591
NAPASKIAK	9	\$2,890	0	\$0	0	\$0	0	\$0	399	16	\$2,553	73	\$100,669
NAUKATI	0	\$0	0	\$0	0	\$0	< 5	\$1,073	0	0	\$0	0	\$0
NAUKATI BAY	8	\$1,962	< 5	\$852	0	\$0	0	\$0	88	7	\$903	21	\$11,974
NELSON LAGOON	< 5	\$362	0	\$0	0	\$0	0	\$0	13	< 5	\$336	7	\$3,559
NENANA	26	\$8,056	< 5	\$586	0	\$0	< 5	\$908	316	24	\$4,266	53	\$27,174
NEW STUYAHOK	28	\$7,280	0	\$0	0	\$0	0	\$0	419	17	\$2,330	64	\$86,787
NEWHALEN	0	\$0	0	\$0	0	\$0	0	\$0	45	< 5	\$223	8	\$10,026
NEWTOK	8	\$2,175	0	\$0	0	\$0	0	\$0	268	12	\$2,526	27	\$32,050
NIGHTMUTE	< 5	\$1,499	0	\$0	0	\$0	0	\$0	206	7	\$1,355	19	\$30,671
NIKISKI	58	\$18,950	12	\$7,280	< 5	\$1,983	< 5	\$3,724	981	57	\$7,827	150	\$75,781
NIKOLAEVSK	15	\$5,096	< 5	\$1,134	0	\$0	2	\$1,073	130	13	\$1,988	19	\$9,841
NIKOLAI	7	\$1,985	0	\$0	0	\$0	< 5	\$0	58	5	\$775	16	\$10,844
NIKOLSKI	< 5	\$361	0	\$0	0	\$0	0	\$0	11	< 5	\$175	0	\$0
NINILCHIK	36	\$10,141	5	\$3,827	0	\$0	5	\$5,186	430	63	\$9,310	83	\$33,430
NOATAK	13	\$3,461	0	\$0	0	\$0	7	\$34,273	371	10	\$1,079	61	\$84,504
NOME	51	\$16,223	14	\$11,007	< 5	\$560	3	\$7,074	1,270	38	\$4,719	257	\$184,172
NONDALTON	6	\$1,935	0	\$0	0	\$0	< 5	\$0	105	< 5	\$269	19	\$14,635
NOORVIK	14	\$4,574	0	\$0	0	\$0	6	\$24,936	501	13	\$1,756	76	\$100,535
NORTH POLE	269	\$86,819	24	\$15,599	40	\$40,945	24	\$36,692	4,856	172	\$27,108	534	\$270,495
NORTHWAY	17	\$6,719	0	\$0	0	\$0	0	\$0	160	14	\$2,547	30	\$23,146
NUIQSUT	< 5	\$544	< 5	\$900	0	\$0	0	\$0	233	0	\$0	16	\$19,677
NULATO	19	\$5,578	0	\$0	0	\$0	0	\$0	144	17	\$2,722	23	\$16,330
NUNAM IQUA	< 5	\$599	0	\$0	0	\$0	0	\$0	193	< 5	\$659	31	\$46,204
NUNAPITCHUK	21	\$5,984	0	\$0	0	\$0	0	\$0	506	23	\$4,213	66	\$112,536
OLD HARBOR	12	\$4,299	< 5	\$840	0	\$0	< 5	\$2,673	110	5	\$749	15	\$10,469
OSCARVILLE	< 5	\$362	0	\$0	0	\$0	0	\$0	10	< 5	\$2,188	< 5	\$3,937
OUZINKIE	< 5	\$947	0	\$0	0	\$0	1	\$1,155	70	< 5	\$303	9	\$5,170
PALMER	505	\$157,525	74	\$49,395	70	\$59,085	< 5	\$17,645	8,122	315	\$47,177	978	\$454,898
PEDRO BAY	< 5	\$368	0	\$0	0	\$0	< 5	\$2,805	9	0	\$0	< 5	\$1,750
PELICAN	< 5	\$914	< 5	\$312	0	\$0	< 5	\$825	46	< 5	\$251	< 5	\$1,424

**DPA Statewide Profile - SFY 2021**  
**Average Monthly Caseloads & Benefits by City of Residence**

Community	APA		ATAP		CC <sup>5</sup>		HAP		ME	SB		SNAP	
	Cases	Benefits	Cases	Benefits	Cases	Benefits	Cases	Benefits	Cases	Cases	Benefits	Cases	Benefits
PERRYVILLE	< 5	\$1,212	0	\$0	0	\$0	< 5	\$1,683	68	< 5	\$245	16	\$12,035
PETERS CREEK	< 5	\$827	0	\$0	0	\$0	0	\$0	12	< 5	\$410	< 5	\$509
PETERSBURG	51	\$15,981	7	\$4,292	16	\$17,219	3	\$2,169	917	47	\$7,424	121	\$56,163
PILOT POINT	< 5	\$119	0	\$0	0	\$0	< 5	\$0	48	< 5	\$95	6	\$7,339
PILOT STATION	27	\$8,195	0	\$0	0	\$0	0	\$0	561	21	\$3,538	114	\$153,209
PITKA'S POINT	< 5	\$362	0	\$0	0	\$0	0	\$0	8	0	\$0	< 5	\$3,262
PITKAS POINT	0	\$0	0	\$0	0	\$0	0	\$0	13	0	\$0	0	\$0
PLATINUM	< 5	\$1,005	0	\$0	0	\$0	0	\$0	28	< 5	\$196	< 5	\$2,196
PLEASANT VALLEY	0	\$0	0	\$0	0	\$0	< 5	\$1,155	0	0	\$0	0	\$0
POINT BAKER	< 5	\$1,268	0	\$0	0	\$0	< 5	\$1,650	10	< 5	\$342	< 5	\$1,384
POINT HOPE	< 5	\$776	9	\$6,560	0	\$0	< 5	\$11,908	457	< 5	\$373	57	\$72,966
POINT LAY	0	\$0	< 5	\$1,036	0	\$0	< 5	\$2,805	159	0	\$0	9	\$12,267
PORT ALEXANDER	< 5	\$427	0	\$0	0	\$0	< 5	\$990	36	< 5	\$250	5	\$2,806
PORT ALSWORTH	0	\$0	0	\$0	0	\$0	0	\$0	94	< 5	\$175	< 5	\$1,377
PORT GRAHAM	10	\$3,039	< 5	\$1,234	0	\$0	< 5	\$1,485	100	< 5	\$196	11	\$9,838
PORT HEIDEN	0	\$0	0	\$0	0	\$0	0	\$0	44	< 5	\$76	9	\$5,943
PORT LIONS	0	\$0	0	\$0	0	\$0	< 5	\$1,760	58	< 5	\$76	< 5	\$803
PORT PROTECTION	2	\$1,306	0	\$0	0	\$0	0	\$0	13	< 5	\$823	< 5	\$1,447
PORTAGE CREEK	0	\$0	0	\$0	0	\$0	0	\$0	< 5	0	\$0	0	\$0
QUINHAGAK	28	\$9,323	0	\$0	0	\$0	0	\$0	623	26	\$4,433	115	\$136,558
RAMPART	< 5	\$362	0	\$0	0	\$0	0	\$0	44	< 5	\$425	< 5	\$5,659
RED DEVIL	< 5	\$603	0	\$0	0	\$0	0	\$0	13	< 5	\$76	6	\$3,684
RUBY	7	\$2,752	0	\$0	0	\$0	0	\$0	94	9	\$1,677	18	\$13,954
RUSSIAN MISSION	9	\$2,619	0	\$0	0	\$0	< 5	\$825	358	6	\$1,058	52	\$74,391
SAINT GEORGE	0	\$0	< 5	\$655	0	\$0	0	\$0	15	< 5	\$175	< 5	\$1,930
SAINT MARYS	16	\$5,250	0	\$0	0	\$0	0	\$0	544	19	\$2,435	108	\$128,172
SAINT MICHAEL	0	\$0	0	\$0	0	\$0	< 5	\$4,644	0	0	\$0	0	\$0
SALCHA	20	\$6,500	< 5	\$1,282	< 5	\$603	< 5	\$3,455	263	17	\$2,779	36	\$15,517
SAND POINT	< 5	\$1,758	< 5	\$443	0	\$0	< 5	\$495	226	< 5	\$402	38	\$31,522
SAVOONGA	48	\$14,036	16	\$10,962	0	\$0	12	\$50,042	692	51	\$8,442	134	\$166,278
SAXMAN	6	\$1,700	0	\$0	0	\$0	0	\$0	24	< 5	\$679	10	\$3,762
SCAMMON BAY	17	\$4,365	0	\$0	0	\$0	0	\$0	589	16	\$2,610	88	\$136,844
SELAWIK	25	\$7,391	0	\$0	0	\$0	7	\$33,059	701	20	\$2,456	124	\$144,945
SELDOVIA	18	\$4,078	< 5	\$1,253	0	\$0	< 5	\$2,929	165	23	\$3,158	18	\$11,200
SEWARD	102	\$29,412	8	\$5,297	8	\$4,977	5	\$4,266	1,389	81	\$13,408	222	\$87,099

**DPA Statewide Profile - SFY 2021**  
**Average Monthly Caseloads & Benefits by City of Residence**

Community	APA		ATAP		CC <sup>5</sup>		HAP		ME	SB		SNAP	
	Cases	Benefits	Cases	Benefits	Cases	Benefits	Cases	Benefits	Cases	Cases	Benefits	Cases	Benefits
SHAGELUK	< 5	\$492	0	\$0	0	\$0	0	\$0	52	< 5	\$1,000	12	\$12,556
SHAKTOOLIK	6	\$2,049	< 5	\$1,044	0	\$0	< 5	\$4,400	155	8	\$1,061	19	\$20,591
SHISHMAREF	23	\$7,165	10	\$7,301	0	\$0	8	\$36,512	468	18	\$2,354	84	\$98,113
SHUNGNAK	< 5	\$810	0	\$0	0	\$0	5	\$23,568	179	5	\$492	34	\$41,584
SITKA	153	\$42,538	12	\$7,190	12	\$9,147	< 5	\$2,428	2,621	92	\$13,909	333	\$130,362
SKAGWAY	< 5	\$1,219	< 5	\$280	0	\$0	< 5	\$2,516	275	7	\$1,185	16	\$6,595
SKWENTNA	< 5	\$362	0	\$0	0	\$0	0	\$0	22	< 5	\$171	< 5	\$1,523
SLANA	7	\$2,141	< 5	\$991	0	\$0	< 5	\$3,850	36	11	\$1,842	6	\$3,048
SLEETMUTE	< 5	\$601	0	\$0	0	\$0	0	\$0	47	< 5	\$500	18	\$13,135
SOLDOTNA	363	\$105,932	64	\$44,148	56	\$51,712	19	\$17,562	5,136	269	\$40,003	746	\$318,295
SOUTH NAKNEK	< 5	\$593	0	\$0	0	\$0	0	\$0	29	< 5	\$264	6	\$2,920
ST MICHAEL	5	\$1,722	< 5	\$2,865	0	\$0	0	\$0	303	5	\$825	51	\$68,125
ST PAUL ISLAND	9	\$2,894	< 5	\$859	0	\$0	0	\$0	175	< 5	\$691	31	\$21,503
STEBBINS	26	\$9,241	18	\$12,197	0	\$0	4	\$10,203	578	15	\$2,288	100	\$117,681
STERLING	62	\$20,183	8	\$5,362	< 5	\$3,378	< 5	\$6,724	1,099	65	\$9,524	142	\$63,471
STEVENS VILLAGE	< 5	\$724	0	\$0	0	\$0	0	\$0	24	< 5	\$479	8	\$4,432
STONY RIVER	0	\$0	0	\$0	0	\$0	0	\$0	35	< 5	\$250	6	\$6,871
SUTTON	41	\$13,528	6	\$4,254	< 5	\$1,046	6	\$5,500	547	37	\$6,495	74	\$37,675
TAKOTNA	< 5	\$366	0	\$0	0	\$0	0	\$0	37	< 5	\$76	< 5	\$4,362
TALKEETNA	42	\$12,900	< 5	\$1,571	5	\$3,027	7	\$6,497	788	53	\$7,942	101	\$44,302
TANACROSS	7	\$2,259	< 5	\$539	0	\$0	0	\$0	104	8	\$811	23	\$16,108
TANANA	11	\$3,229	0	\$0	0	\$0	0	\$0	94	7	\$1,259	23	\$12,597
TATITLEK	0	\$0	0	\$0	0	\$0	0	\$0	45	< 5	\$152	< 5	\$2,443
TELLER	8	\$2,843	< 5	\$686	0	\$0	< 5	\$8,811	182	< 5	\$257	30	\$33,068
TENAKEE	< 5	\$724	< 5	\$699	0	\$0	< 5	\$825	5	11	\$2,174	8	\$3,609
TENAKEE SPRINGS	0	\$0	0	\$0	0	\$0	< 5	\$660	22	0	\$0	0	\$0
TETLIN	7	\$2,689	0	\$0	0	\$0	0	\$0	68	5	\$938	18	\$13,659
THORNE BAY	15	\$5,061	< 5	\$578	0	\$0	< 5	\$908	184	17	\$2,709	35	\$17,709
TOGIAK	52	\$16,926	0	\$0	0	\$0	0	\$0	715	29	\$3,083	135	\$153,192
TOK	40	\$11,844	< 5	\$538	0	\$0	5	\$6,703	584	57	\$9,334	81	\$54,572
TOKSOOK BAY	21	\$6,327	0	\$0	0	\$0	0	\$0	512	19	\$2,644	65	\$93,213
TONSINA	0	\$0	0	\$0	0	\$0	0	\$0	< 5	0	\$0	0	\$0
TRAPPER CREEK	28	\$9,460	< 5	\$1,223	< 5	\$548	< 5	\$3,371	255	38	\$5,826	47	\$18,099
TULUKSAK	19	\$6,601	< 5	\$575	0	\$0	0	\$0	398	14	\$2,484	77	\$103,971
TUNTUTULIAK	19	\$5,702	0	\$0	0	\$0	0	\$0	393	12	\$2,021	66	\$91,789

**DPA Statewide Profile - SFY 2021**  
**Average Monthly Caseloads & Benefits by City of Residence**

Community	APA		ATAP		CC <sup>5</sup>		HAP		ME	SB		SNAP	
	Cases	Benefits	Cases	Benefits	Cases	Benefits	Cases	Benefits	Cases	Cases	Benefits	Cases	Benefits
TUNUNAK	13	\$2,854	0	\$0	0	\$0	0	\$0	337	17	\$2,331	49	\$64,019
TWIN HILLS	< 5	\$774	0	\$0	0	\$0	0	\$0	72	< 5	\$152	12	\$13,343
TWO RIVERS	< 5	\$910	0	\$0	0	\$0	< 5	\$3,630	25	< 5	\$675	6	\$1,952
TYONEK	5	\$1,901	< 5	\$812	0	\$0	0	\$0	93	< 5	\$146	17	\$8,723
UGASHIK	< 5	\$307	0	\$0	0	\$0	0	\$0	< 5	< 5	\$76	< 5	\$333
UNALAKLEET	15	\$4,587	< 5	\$801	0	\$0	< 5	\$11,633	300	13	\$2,036	49	\$47,712
UNALASKA	8	\$2,445	< 5	\$676	0	\$0	< 5	\$1,155	169	6	\$832	21	\$15,028
VALDEZ	55	\$16,278	9	\$5,287	7	\$5,437	< 5	\$4,243	788	31	\$5,104	80	\$35,992
VENETIE	22	\$6,977	0	\$0	0	\$0	0	\$0	166	8	\$1,567	42	\$35,669
WAINWRIGHT	< 5	\$62	< 5	\$588	0	\$0	< 5	\$3,465	258	< 5	\$476	22	\$20,332
WALES	< 5	\$563	< 5	\$616	0	\$0	0	\$0	83	< 5	\$243	13	\$11,048
WARD COVE	< 5	\$232	0	\$0	0	\$0	< 5	\$1,870	15	< 5	\$76	< 5	\$327
WASILLA	1,318	\$404,202	207	\$142,977	235	\$221,697	66	\$58,812	23,318	851	\$128,909	3,088	\$1,526,986
WHALE PASS	0	\$0	0	\$0	0	\$0	0	\$0	25	5	\$870	< 5	\$2,414
WHITE MOUNTAIN	8	\$2,659	< 5	\$896	0	\$0	< 5	\$5,610	110	7	\$1,239	28	\$25,384
WHITTIER	6	\$1,896	9	\$7,318	0	\$0	< 5	\$1,155	168	9	\$1,649	38	\$25,126
WILLOW	118	\$38,334	10	\$7,584	0	\$0	12	\$10,869	1,186	97	\$14,542	217	\$92,079
WISEMAN	0	\$0	0	\$0	0	\$0	0	\$0	< 5	0	\$0	0	\$0

**DPA Statewide Profile – SFY 2021**  
**District Office Staffing**

Position	Anchorage	Bethel	Fairbanks	Homer	Juneau	Kenai	Ketchikan	Kodiak	Long Term Care	Mat-Su/ Wasilla	Nome	Sitka	Total
<b>Filled Positions</b>													
EOM II	2				1		1						4
EST II			8	1		5	1			8	3		26
EST III			1			1				1			3
ET II	49	7	21	5	10	11	11	2	13	40	2		171
ET III	21	2	4		2	4	3		2	12			50
ET IV	6		3	1	2	2	2	1	2	3	1		23
OA I	11	1	6		2	1	2		2	8			33
OA II	10	1	2	1	2		1	1	2	7	1	1	29
OA IV	2	1	1		1	1	1	1	1	1	1		11
PAA II	1												1
PAFSM II							2						2
<b>Total Filled</b>	<b>102</b>	<b>12</b>	<b>46</b>	<b>8</b>	<b>20</b>	<b>25</b>	<b>24</b>	<b>5</b>	<b>22</b>	<b>80</b>	<b>8</b>	<b>1</b>	<b>353</b>
<b>Vacant Positions</b>													
EOM II		1				1			1				3
ET II	26		9	1	9	2	2		3	11	2	1	66
ET IV										4			4
OA I	5					2			1				8
OA II	2									2			4
<b>Total Vacant</b>	<b>33</b>	<b>1</b>	<b>9</b>	<b>1</b>	<b>9</b>	<b>5</b>	<b>2</b>	<b>0</b>	<b>5</b>	<b>17</b>	<b>2</b>	<b>1</b>	<b>85</b>
<b>Total Positions</b>	<b>135</b>	<b>13</b>	<b>55</b>	<b>9</b>	<b>29</b>	<b>30</b>	<b>26</b>	<b>5</b>	<b>27</b>	<b>97</b>	<b>10</b>	<b>2</b>	<b>438</b>

Staffing current as of 06/23/2021

## DPA Statewide Profile – SFY 2021

Notes	
<b>1</b>	SNAP benefit amounts include Supplemental Payments and Hold Harmless cash payments.
<b>2</b>	ATAP data do not include Refuse Cash cases. ATAP benefit amounts include Supplemental Payments, Supportive Services payments and Pass I Child Care payments.
<b>3</b>	Medicaid numbers include all eligible families and individuals; they do not reflect only those with paid claims. The DPA does not make medicaid benefit payments
<b>4</b>	The Heating Assistance Program runs on the federal fiscal year. However, the values used for this report are from the state fiscal year, so they cross over two HAP fiscal years.
<b>5</b>	The data for Child Care only cover 10 months of SFY21 due to an ongoing database closure connected to the malware attack in May 2021. Child Care numbers only include those families and individuals that received a verified Child Care payment, not everyone eligible for a payment.
<b>6</b>	In April 2021, the census area Valdez/Cordova was split apart into Chugach and Copper River census areas. But to calculate the averages for this report the two new census areas were recombined into one for April, May and June 2021.
<b>7</b>	SNAP benefit amounts in 2020 and 2021 were affected by some of the payouts of the COVID 19-related Emergency Allotments being made retroactively.